

2 / 2 NC



2-WAY SOLENOID PILOT VALVES

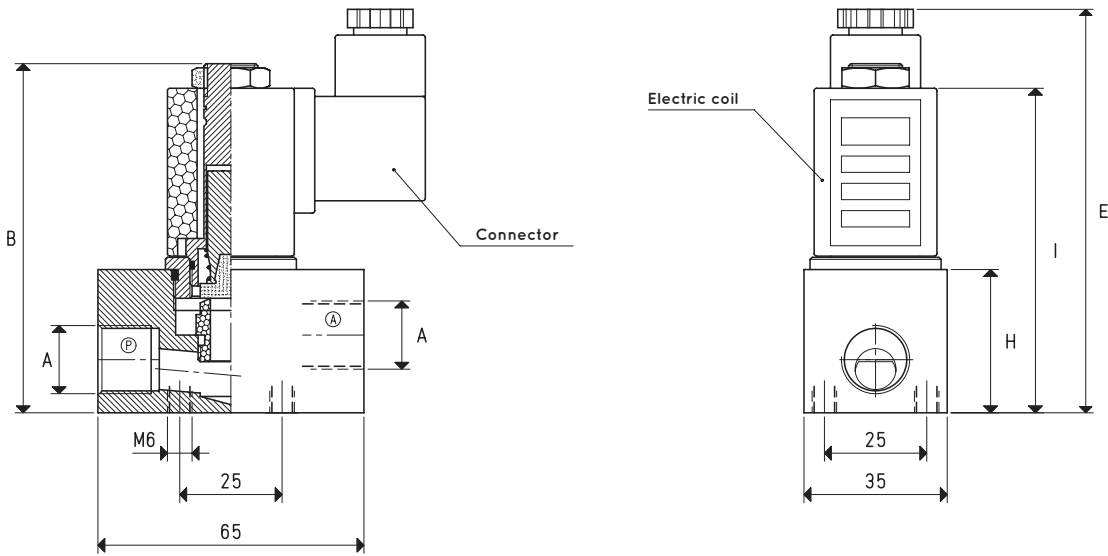
| Item | A Ø | Max flow rate m³/h | Level of vacuum abs. mbar | | Reaction time msec | | Mouth Ø | Cross-section of passage mm² | B | E | H | I | Weight g |
|-----------------|--------|-----------------------|------------------------------|-----|-----------------------|-----------|------------|------------------------------------|----|----|----|----|-------------|
| | | | min | max | energ. | de-energ. | | | | | | | |
| 07 01 20 | G1/4" | 4 | 1000 | 0.5 | 15 | 8 | 6 | 28.3 | 73 | 86 | 25 | 67 | 244 |

Note: The coil and the connector are not integral parts of the solenoid pilot valve and, therefore, must be ordered separately (See accessories for solenoid valves).

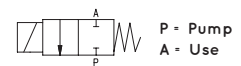
Transformation ratio: N (newton) = Kg x 9.81 (force of gravity)

$$\text{inch} = \frac{\text{mm}}{25.4}; \text{pounds} = \frac{\text{g}}{453.6} = \frac{\text{Kg}}{0.4536}$$

Adapters for GAS - NPT threading available on page 1.130



2 / 2 NC



2-WAY SOLENOID PILOT VALVES

| Item | A Ø | Max flow rate m³/h | Level of vacuum abs. mbar | | Reaction time msec | | Mouth Ø | Cross-section of passage mm² | B | E | H | I | Weight g |
|-----------------|--------|-----------------------|------------------------------|-----|-----------------------|-----------|------------|------------------------------------|----|----|----|----|-------------|
| | | | min | max | energ. | de-energ. | | | | | | | |
| 07 02 20 | G3/8" | 8 | 1000 | 0.5 | 22 | 10 | 10 | 78.5 | 85 | 98 | 35 | 79 | 384 |
| 07 03 20 | G1/2" | 10 | 1000 | 0.5 | 28 | 10 | 12 | 113.0 | 85 | 98 | 35 | 79 | 372 |

Note: The coil and the connector are not integral parts of the solenoid pilot valve and, therefore, must be ordered separately (See accessories for solenoid valves).

Transformation ratio: N (newton) = Kg x 9.81 (force of gravity)

inch = $\frac{\text{mm}}{25.4}$; pounds = $\frac{\text{g}}{453.6} = \frac{\text{Kg}}{0.4536}$

Adapters for GAS - NPT threading available on page 1.130