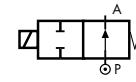


## COMMON FEATURES

**Body material:** brass (CW617N EN 12165)  
**Orifice material:** stainless steel (1.4305 EN 10088/AISI 303)  
**Operator material:** stainless steel  
**Protection class:** IP 65 (with connector and gasket)

## TYPE: RD236

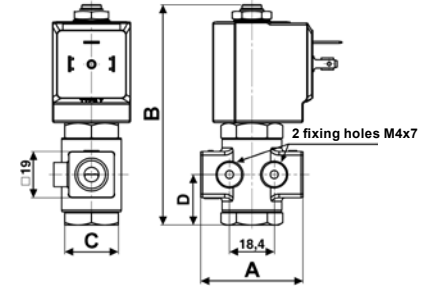


Normally Open



DIMENSIONS & WEIGHTS		RD236
<b>G connection</b>	[ISO 228]	1/4"
<b>A</b>	[mm]	47 *
<b>B</b>	[mm]	91
<b>C</b>	[mm]	HEX 22
<b>D</b>	[mm]	20.75
<b>weight</b>	[kg]	0.25

\* Since July 2014



Flow direction overseat 1 → 2

VALVE	nominal Ø	flow rate Kvs	OPD			COILS	
			min.	max. AC	max. DC	code	[Volts/Hz]
code	[mm]	[l/min]	[barg]	[barg]	[barg]	code	[Volts/Hz]
<b>RD236DVA</b>	1.0	0.5	0	25	25	7250	24v DC
<b>RD236DVC</b>	1.5	1.3	0	20	20	7200	24v 50/60Hz
<b>RD236DVE</b>	2.0	2.0	0	18	18	7400	110v 50Hz - 120v 60Hz
<b>RD236DVG</b>	2.5	2.8	0	15	15	7600	200v 50Hz - 220v 60Hz
<b>RD236DVH</b>	3.0	3.5	0	12	12	7700	230v 50Hz - 240v 60Hz
<b>RD236DVM</b>	4.5	5.5	0	5	5		
<b>RD236DVP</b>	6.0	8.5	0	2	2		

### RD236 - FKM seal, NO -

**Media:** water, oil, air  
**Media temperature:** -10°C ÷ +130°C  
**Ambient temperature:** -10°C ÷ +50°C  
**Seal material:** foodgrade FKM  
**Coil power:** AC 18v<sub>A</sub> (holding)  
                   AC 36v<sub>A</sub> (inrush)  
                   DC 14w

VALVE	nominal Ø	flow rate Kvs	OPD			COILS class 'H' only	
			min.	max. AC	max. DC	code	[Volts/Hz]
code	[mm]	[l/min]	[barg]	[barg]	[barg]	code	[Volts/Hz]
<b>RD236DLA</b>	1.0	0.5	0	9	9	7251	24v DC
<b>RD236DLC</b>	1.5	1.3	0	9	9	7201	24v 50/60Hz
<b>RD236DLE</b>	2.0	2.0	0	9	9	7401	110v 50Hz - 120v 60Hz
<b>RD236DLH</b>	3.0	3.5	0	9	9	7601	200v 50Hz - 220v 60Hz
						7701	230v 50Hz - 240v 60Hz

### RD236 - FILLED PTFE seal, NO -

**Media:** steam  
**Media temperature:** -10°C ÷ +180°C  
**Ambient temperature:** -10°C ÷ +70°C  
**Seal material:** Sigodur (filled PTFE)  
**Coil power:** AC 18v<sub>A</sub> (holding)  
                   AC 36v<sub>A</sub> (inrush)  
                   DC 14w

### NOTES

Seamless tube as standard

VALVE	nominal Ø	flow rate Kvs	OPD			COILS high power - class 'H' only	
			min.	max. AC	max. DC	code	[Volts/Hz]
code	[mm]	[l/min]	[barg]	[barg]	[barg]	code	[Volts/Hz]
<b>RD236DRA1</b>	1.0	0.5	0	180	180	72Z1	24v DC
<b>RD236DRC1</b>	1.5	1.3	0	150	150	72K1	24v 50/60Hz
<b>RD236DRE1</b>	2.0	2.0	0	60	60	74K1	110v 50Hz - 120v 60Hz
<b>RD236DRG1</b>	2.5	2.8	0	37	37	77K1	230v 50Hz - 240v 60Hz
<b>RD236DRH1</b>	3.0	3.5	0	28	28		

### RD236 - RUBY seal, NO -

**Media<sup>Ⓢ</sup>:** water, oil, liquids  
**Media temperature:** -10°C ÷ +130°C  
**Ambient temperature:** -10°C ÷ +50°C  
**Seal material:** Ruby  
**Coil power:** AC 25v<sub>A</sub> (holding)  
                   AC 50v<sub>A</sub> (inrush)  
                   DC 22w

### NOTES

Seamless tube as standard

Ⓢ Not 100% leak-proof when used with air/gases. Approximate leak rate is 1,5 ml/min at max. OPD.