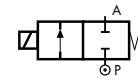


### COMMON FEATURES

- Media: water, oil, air
- Media temperature:  $-10^{\circ}\text{C} \div +130^{\circ}\text{C}$
- Ambient temperature:  $-10^{\circ}\text{C} \div +50^{\circ}\text{C}$
- Body material: brass (CW617N EN 12165)
- Operator material: stainless steel
- Protection class: IP 65 (with connector and gasket)

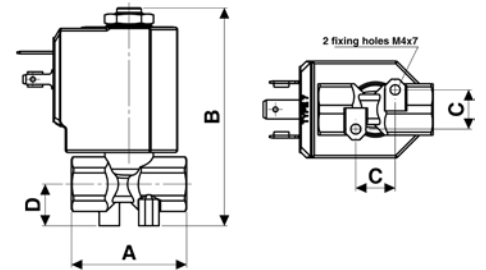
### TYPE: D249



Normally Closed



DIMENSIONS & WEIGHTS		D249
G connection	[ISO 228]	1/4"
A	[mm]	38
B	[mm]	72.1
C	[mm]	13
D	[mm]	13.8
weight	[kg]	0.18



Flow direction overseat 1 → 2

VALVE	nominal Ø	flow rate Kvs	OPD			COILS	
			min. [barg]	max. Ac [barg]	max. Dc [barg]	code	[Volts/Hz]
code	[mm]	[l/min]	[barg]	[barg]	[barg]	code	[Volts/Hz]
<b>D249DVD</b>	1.7	1.5	0	25	24	7250	24v DC
<b>D249DVF</b>	2.2	2.4	0	18	16	7200	24v 50/60Hz
<b>D249DVH *</b>	3.0	4.5	0	15	10	7400	110v 50Hz - 120v 60Hz
						7600	200v 50Hz - 220v 60Hz
						7700	230v 50Hz - 240v 60Hz

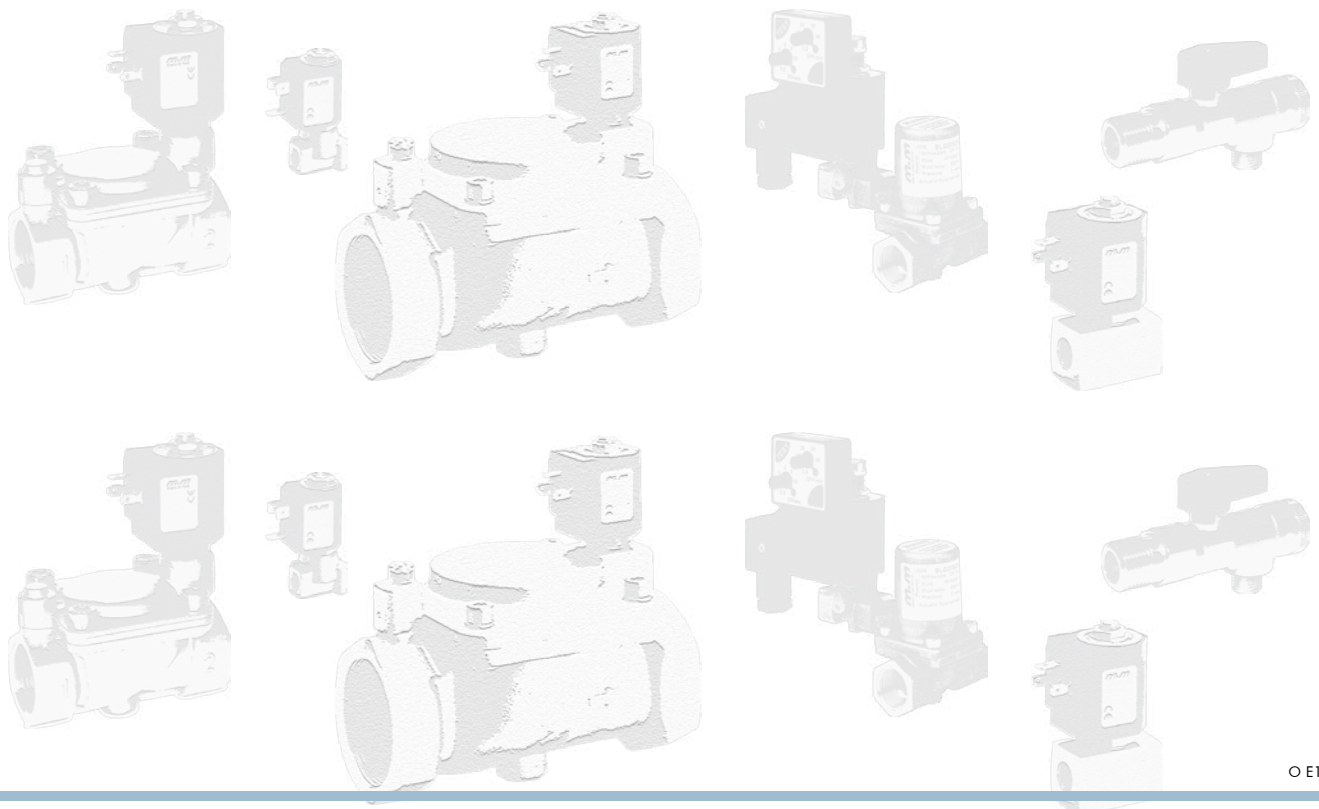
### D249 - FKM seal, NC -

- Seal material: FKM
- Coil power: AC 18v<sub>A</sub> (holding)
- AC 36v<sub>A</sub> (inrush)
- DC 14w

### OPTIONS

EPDM seal, temperature max. 120°C (e.g. code D249DEF)

\* Minimum batch may be required



We reserve the right to make changes without notice