

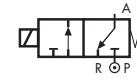
COMMON FEATURES

Media: water, oil, air
Media temperature: -10°C ÷ +130°C
Ambient temperature: -10°C ÷ +50°C
Body material: brass (CW617N EN 12165)
Orifice material: stainless steel (1.4305 EN 10088/AISI 303)
Operator material: stainless steel
Seal material: foodgrade FKM
Protection class: IP 65 (with connector and gasket)

OPTIONS

Available with body thread connection 1/8" (e.g. code D362CVA), performance ratings remain the same as D363CVA.
NPT connection on request, minimum batch may be required (e.g. code RD363CVCN).

TYPE: D362/363



Normally Closed

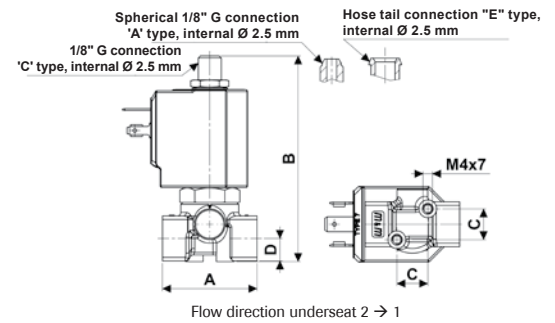
TYPE: RD362/363



Normally Open



DIMENSIONS & WEIGHTS		D362	D363	RD362	RD363
G connection	[ISO 228]	1/8"	1/4"	1/8"	1/4"
A	[mm]	40	40	40	40
B	[mm]	87	87	87	87
C	[mm]	13	13	13	13
D	[mm]	9.5	9.5	9.5	9.5
weight	[kg]	0.26	0.26	0.26	0.26



VALVE	nominal Ø	flow rate Kvs	OPD		
			min.	max. AC	max. DC
code	[mm]	[l/min]	[barg]	[barg]	[barg]
D363CVC	1.5	1.3	0	18	18
D363CVE	2.0	2.2	0	10	10
D363CVG	2.5	3.4	0	7	7
D363CVH	3.0	4.5	0	5	5
D363CVL [Ⓞ]	4.0	6.0	0	3.5	3.5
D363CVN [Ⓞ]	5.0	7.5	0	2.5	2.5
D363CVP [Ⓞ]	6.0	8.0	0	1.5	1.5

[Ⓞ] Manual override not available for orifice > Ø 3 mm

COILS	
code	[Volts/Hz]
7250	24v DC
7200	24v 50/60Hz
7400	110v 50Hz - 120v 60Hz
7600	200v 50Hz - 220v 60Hz
7700	230v 50Hz - 240v 60Hz

D362/363 - FKM seal, NC -

Coil power: AC 18vA (holding)
 AC 36vA (inrush)
 DC 14w

OPTIONS

EPDM seal, temperature max. 120°C (e.g. code D363CEC)
Manual override (e.g. code D362CVGM)
Armature tube with hose tail connection (e.g. code D362EVG)
Armature tube with spherical 1/8" G connection (e.g. code D362AVC)
ATEX version see TIS *11 12*
 For vacuum see TIS *55 01*
UL approved coils (e.g. code 770R)

VALVE	nominal Ø	flow rate Kvs	OPD		
			min.	max. AC	max. DC
code	[mm]	[l/min]	[barg]	[barg]	[barg]
RD363CVC	1.5	1.3	0	16	13
RD363CVE	2.0	2.2	0	10	10
RD363CVG	2.5	3.4	0	7	7
RD363CVH	3.0	4.5	0	4	4

COILS class 'H' only	
code	[Volts/Hz]
7251	24v DC
7201	24v 50/60Hz
7401	110v 50Hz - 120v 60Hz
7601	200v 50Hz - 220v 60Hz
7701	230v 50Hz - 240v 60Hz

RD362/363 - FKM seal, NO -

Coil power: AC 18vA (holding)
 AC 36vA (inrush)
 DC 14w

